

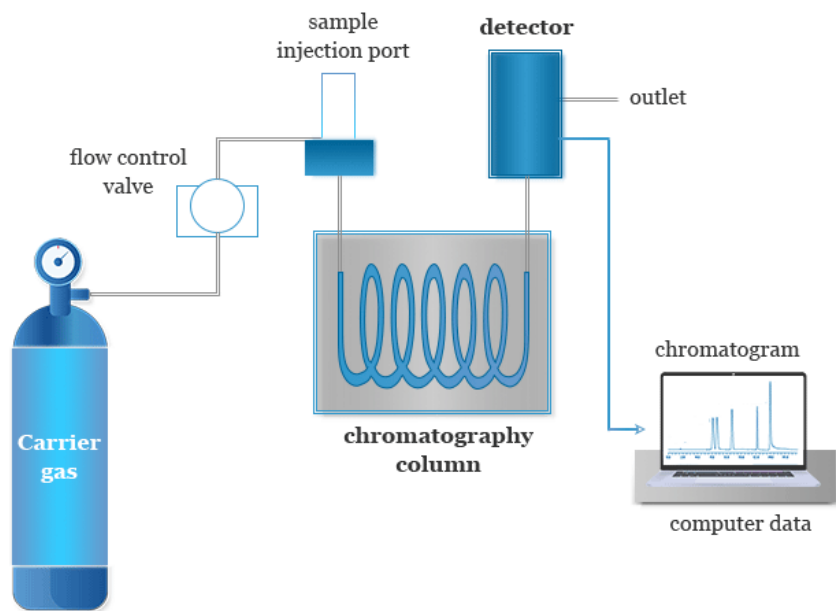
Gas Chromatography

Fundamentals & Cannabis Applications

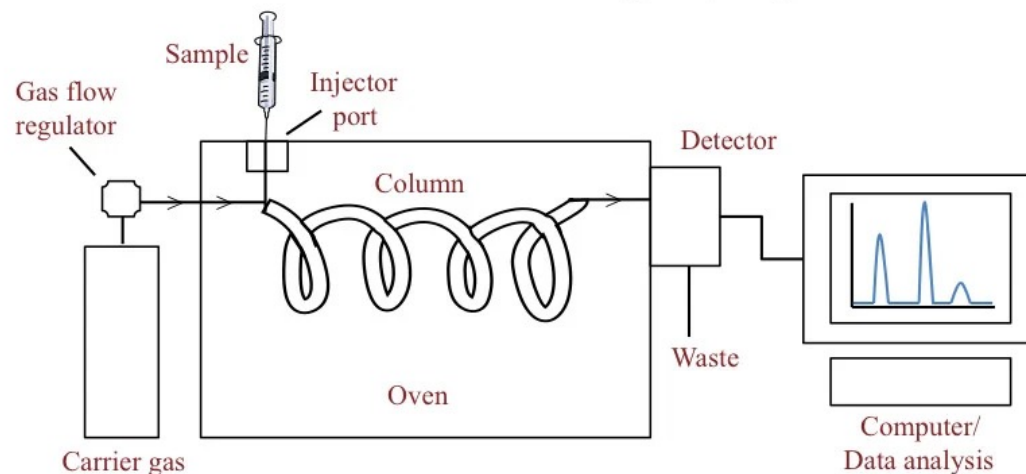
Joseph DiVerdi
Department of Chemistry
Colorado State University
Fort Collins, CO USA
January 2023

GC – Block Diagram

Gas Chromatography



Gas Chromatography



GC – Pictorial Layout

Colorado State University
Fort Collins, CO



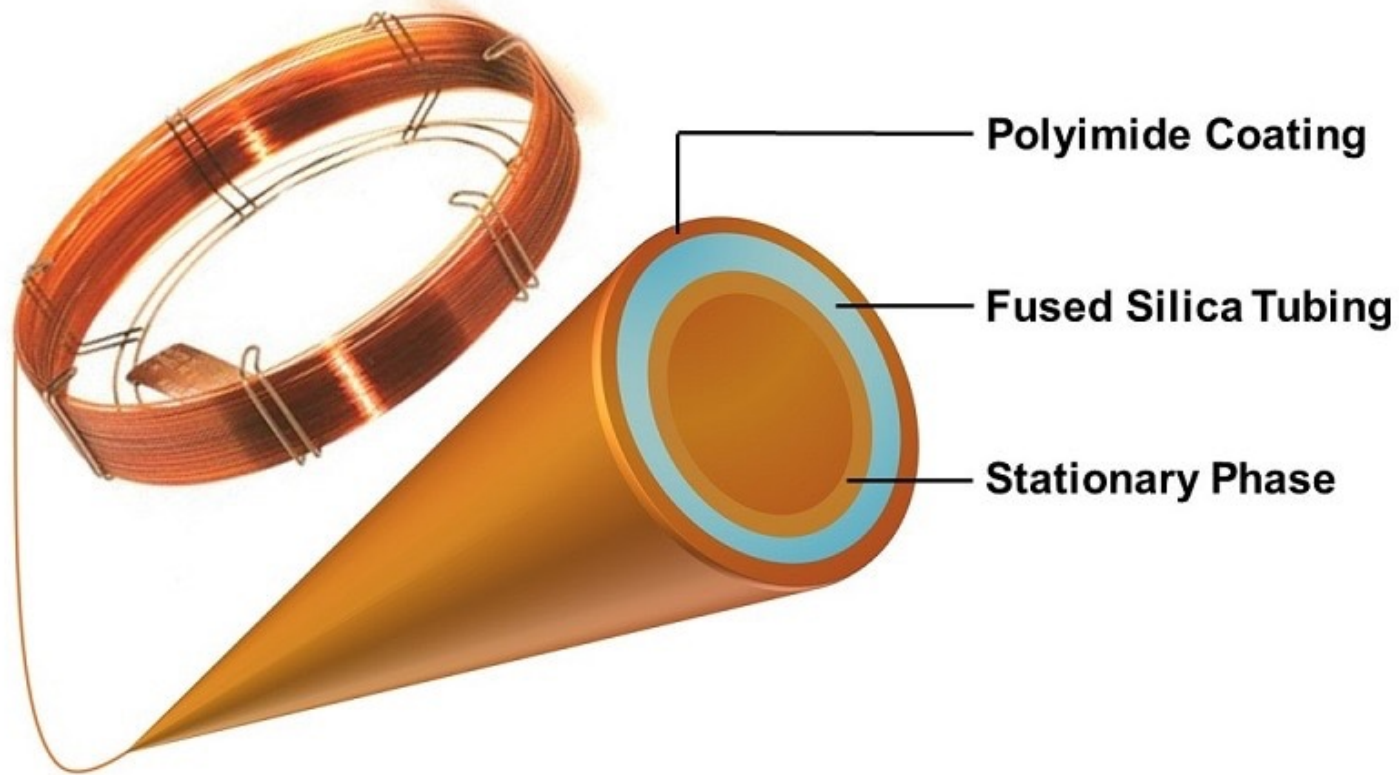
Column Oven – Where the Magic Happens

Colorado State University
Fort Collins, CO



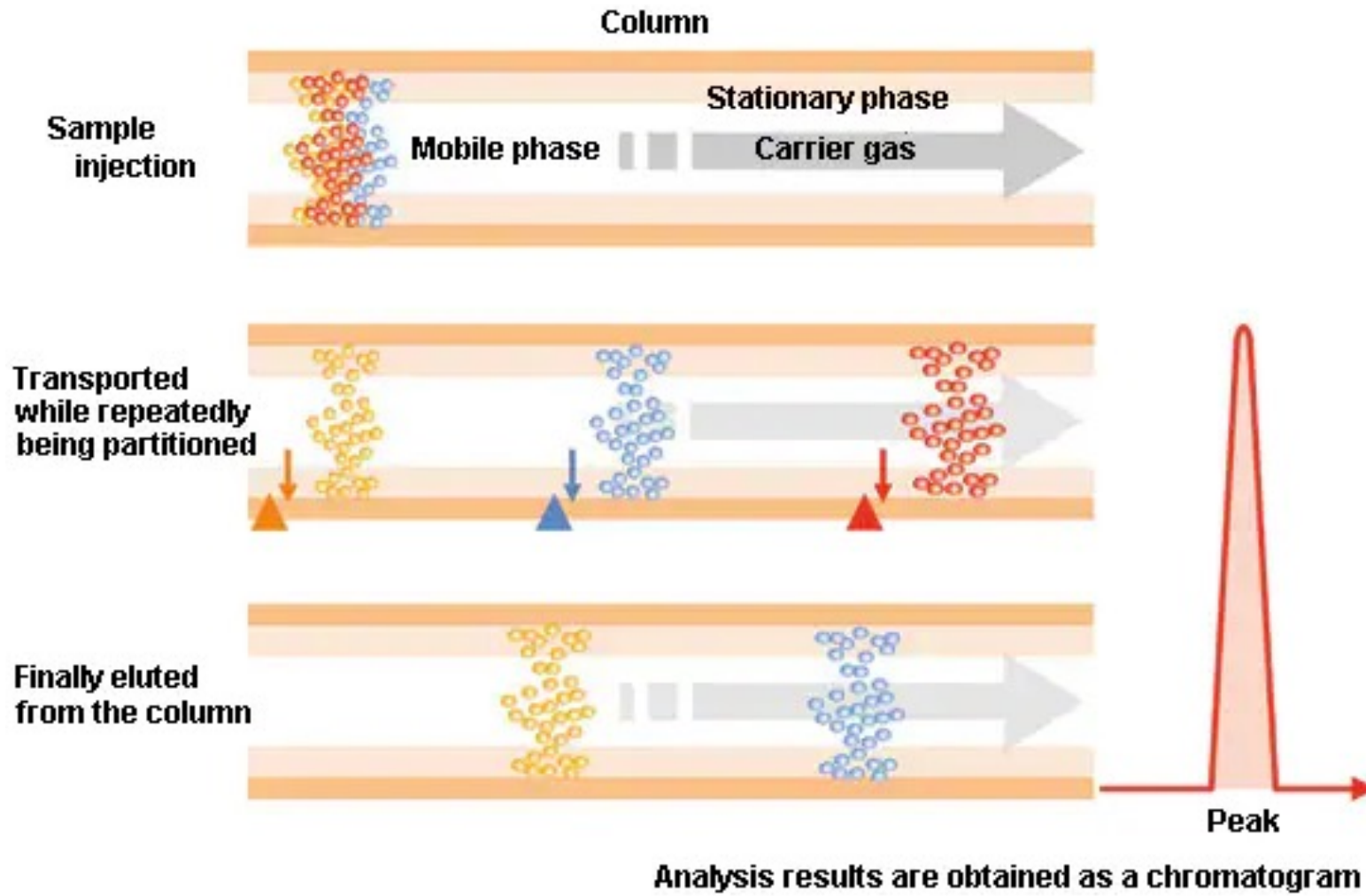
Column Overall Geometry

Colorado State University
Fort Collins, CO



Separation Mechanism

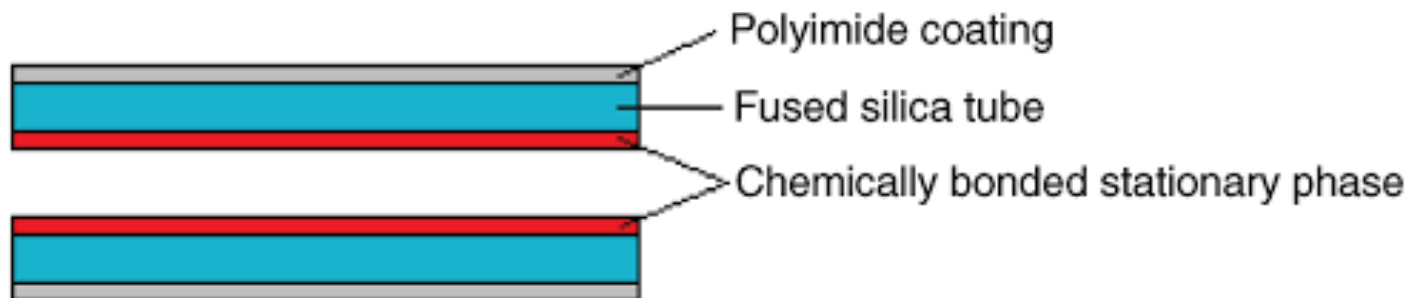
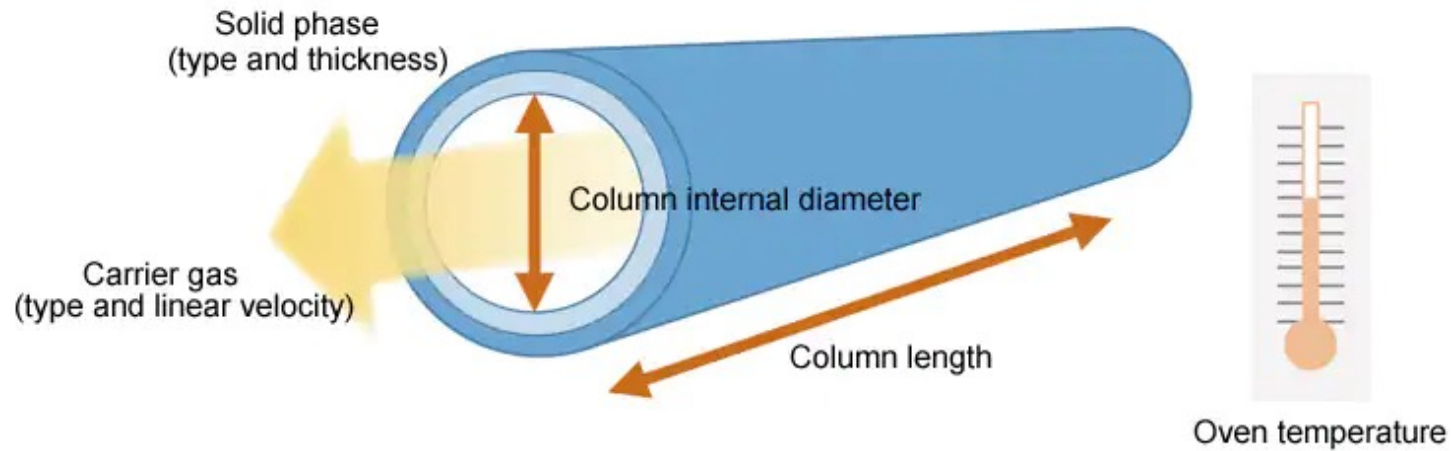
Colorado State University
Fort Collins, CO



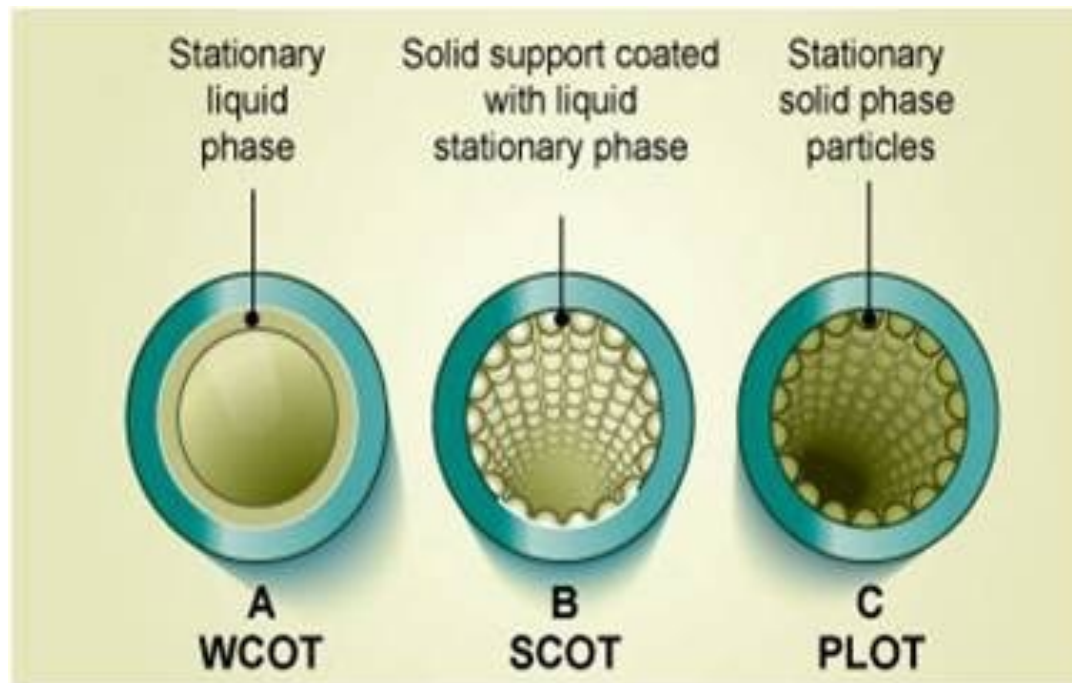
Column Internal Details

Colorado State University
Fort Collins, CO

Elements that Affect Separation

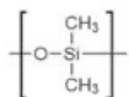


text

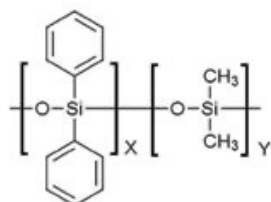


Varying Column Chemistry

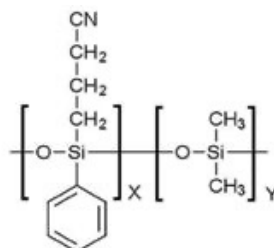
Colorado State University
Fort Collins, CO



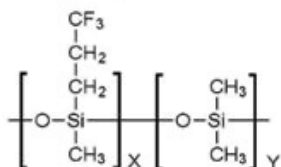
100%
Dimethylpolysiloxane



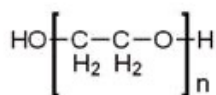
Diphenyl
dimethylpolysiloxane



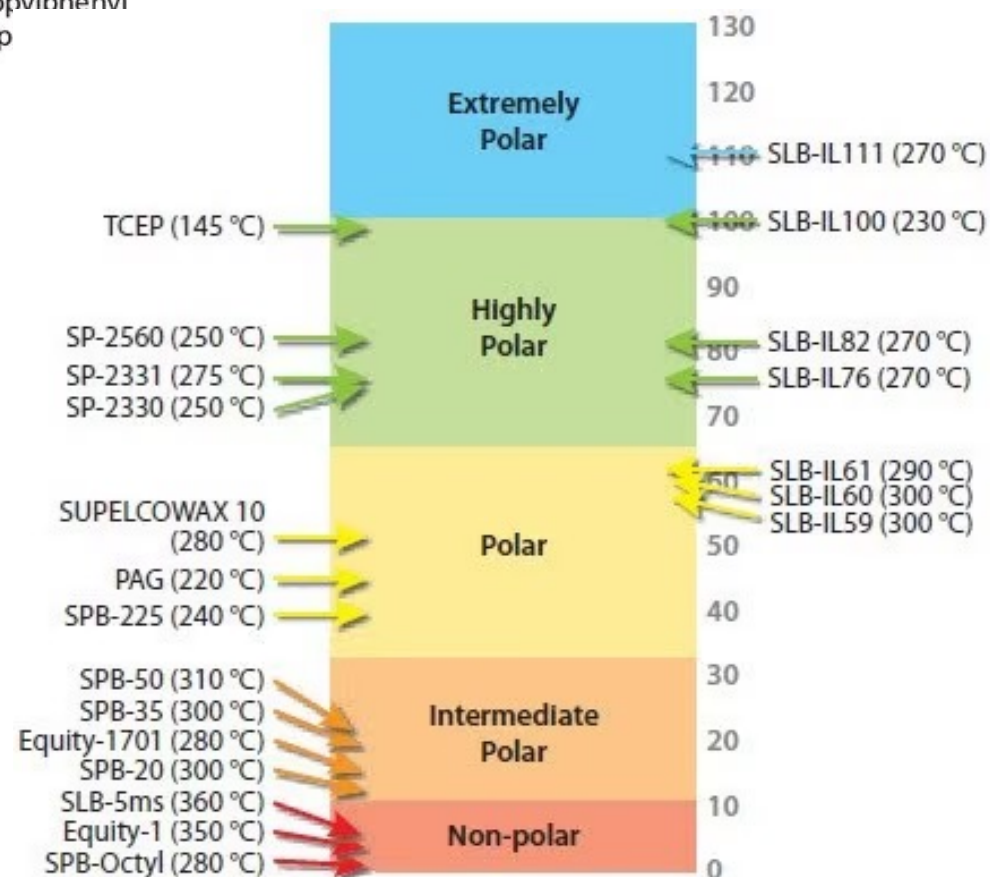
Cyanopropylphenyl
dimethylp



Trifluoropropyl
dimethylpolysiloxane

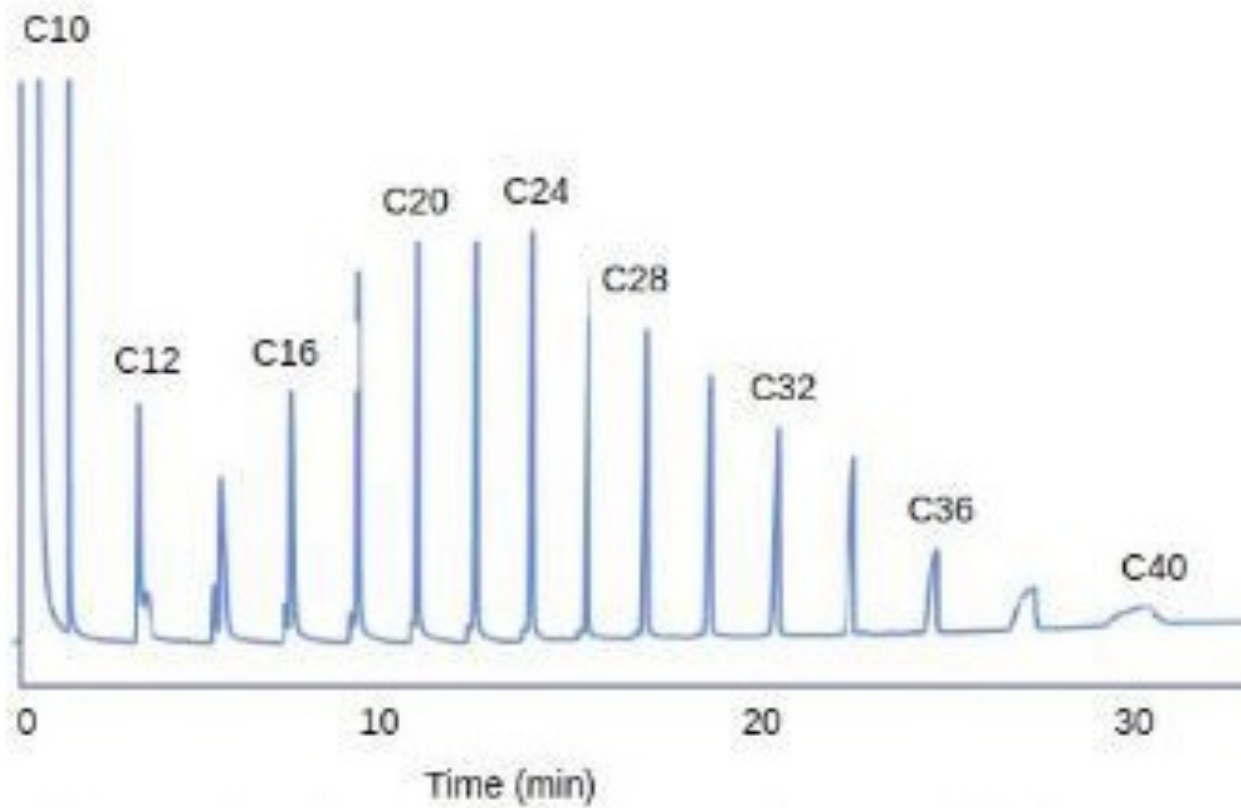


Polyethylene glycol (PEG) or
wax



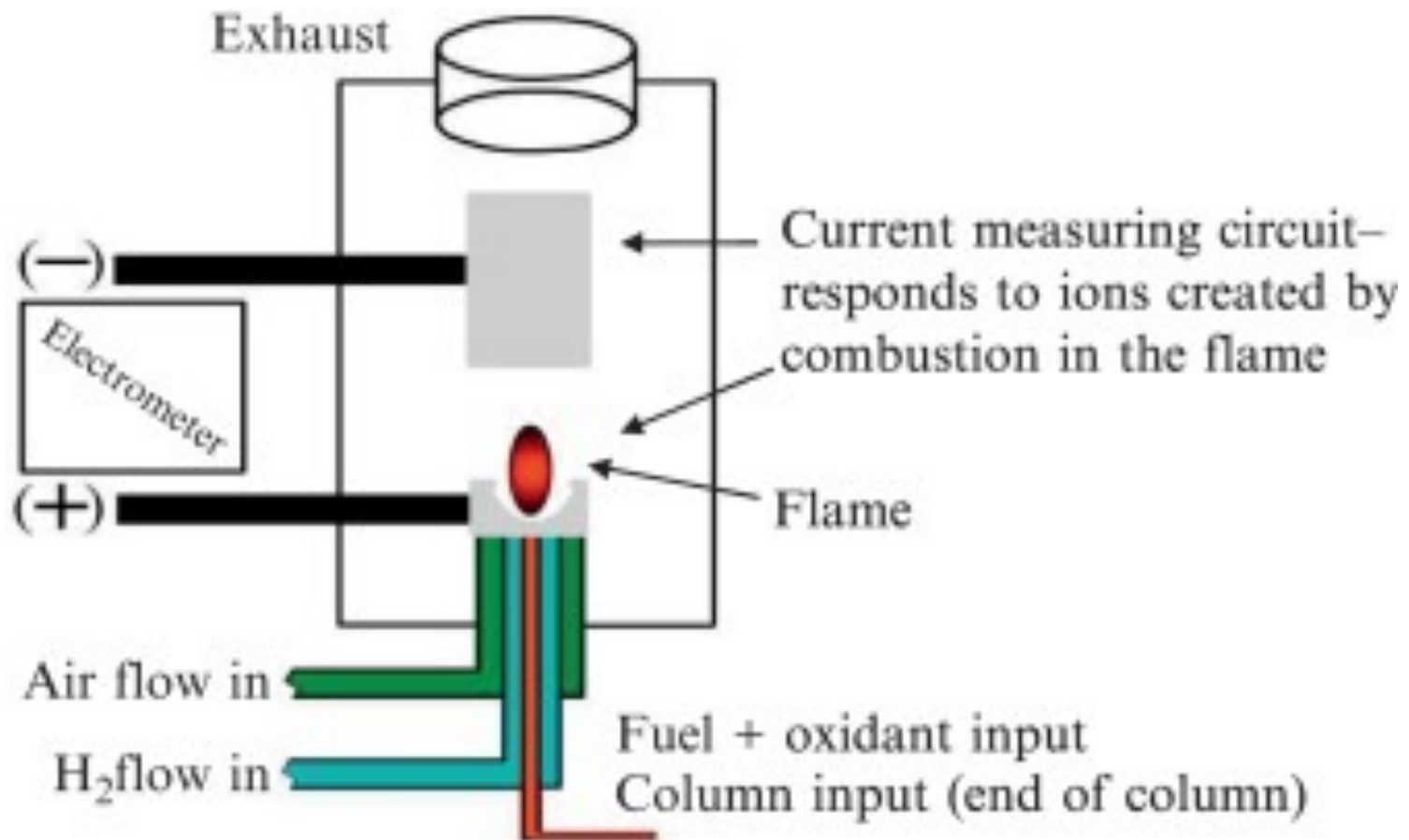
Example Chromatogram

Colorado State University
Fort Collins, CO



Flame Ionization Detector - FID

Colorado State University
Fort Collins, CO



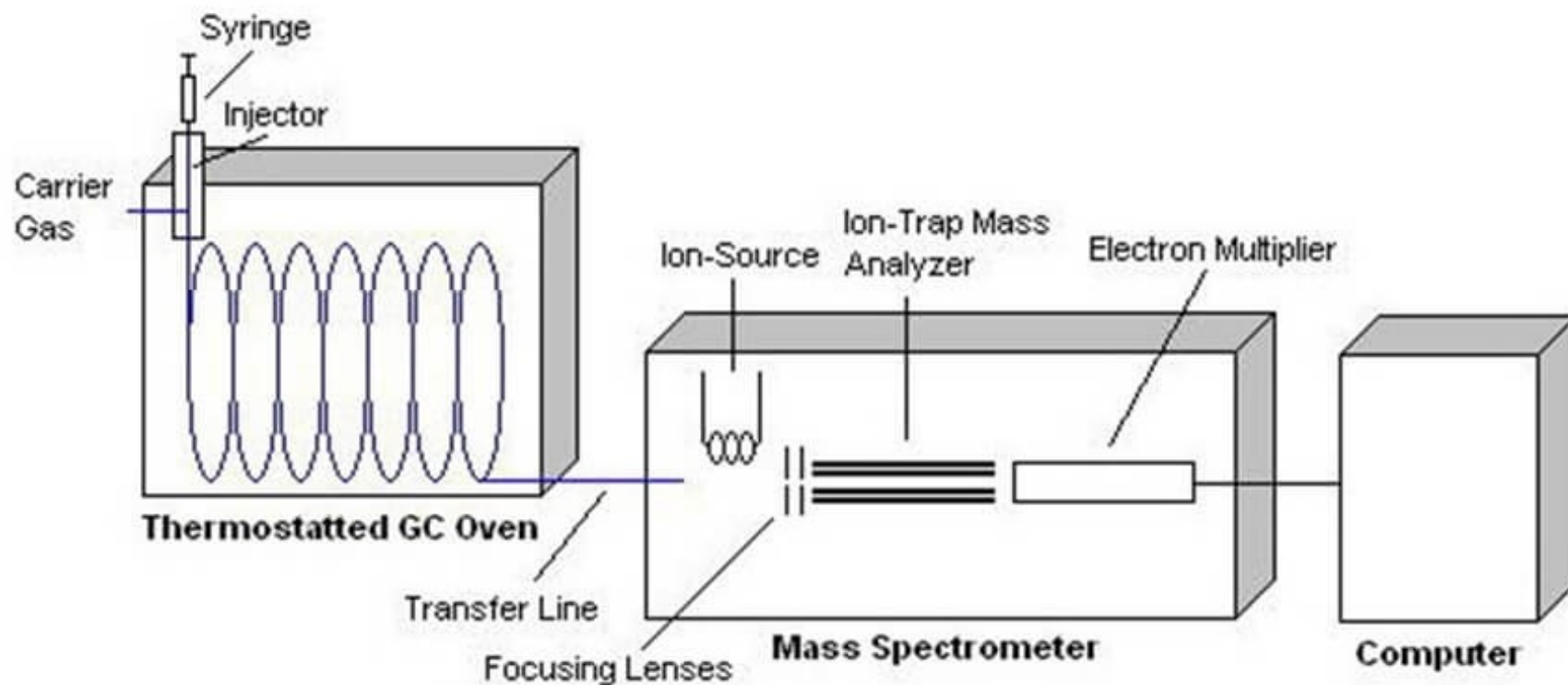
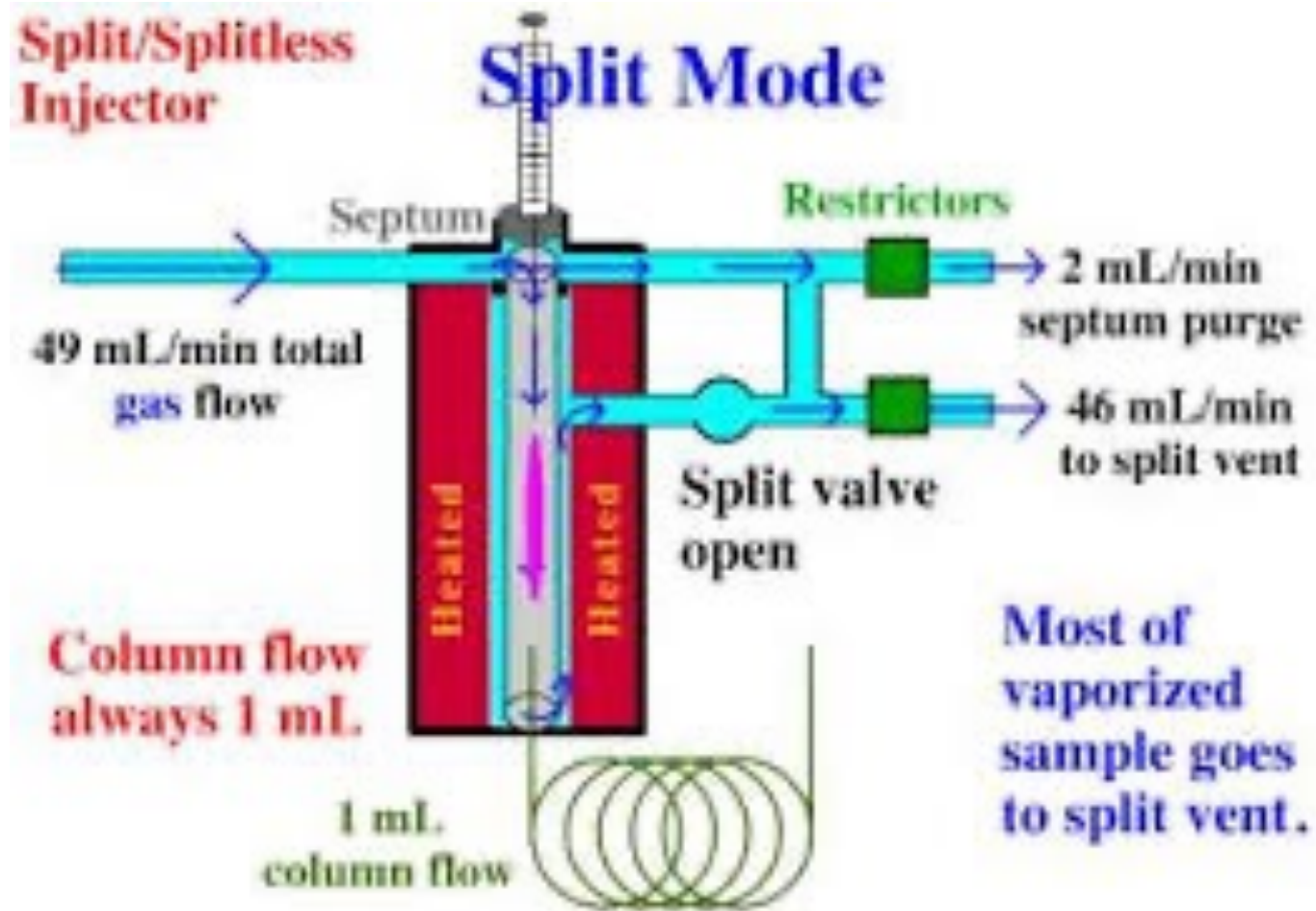


Figure 1 – Diagram of Gas Chromatograph with Mass Spectrometer attached

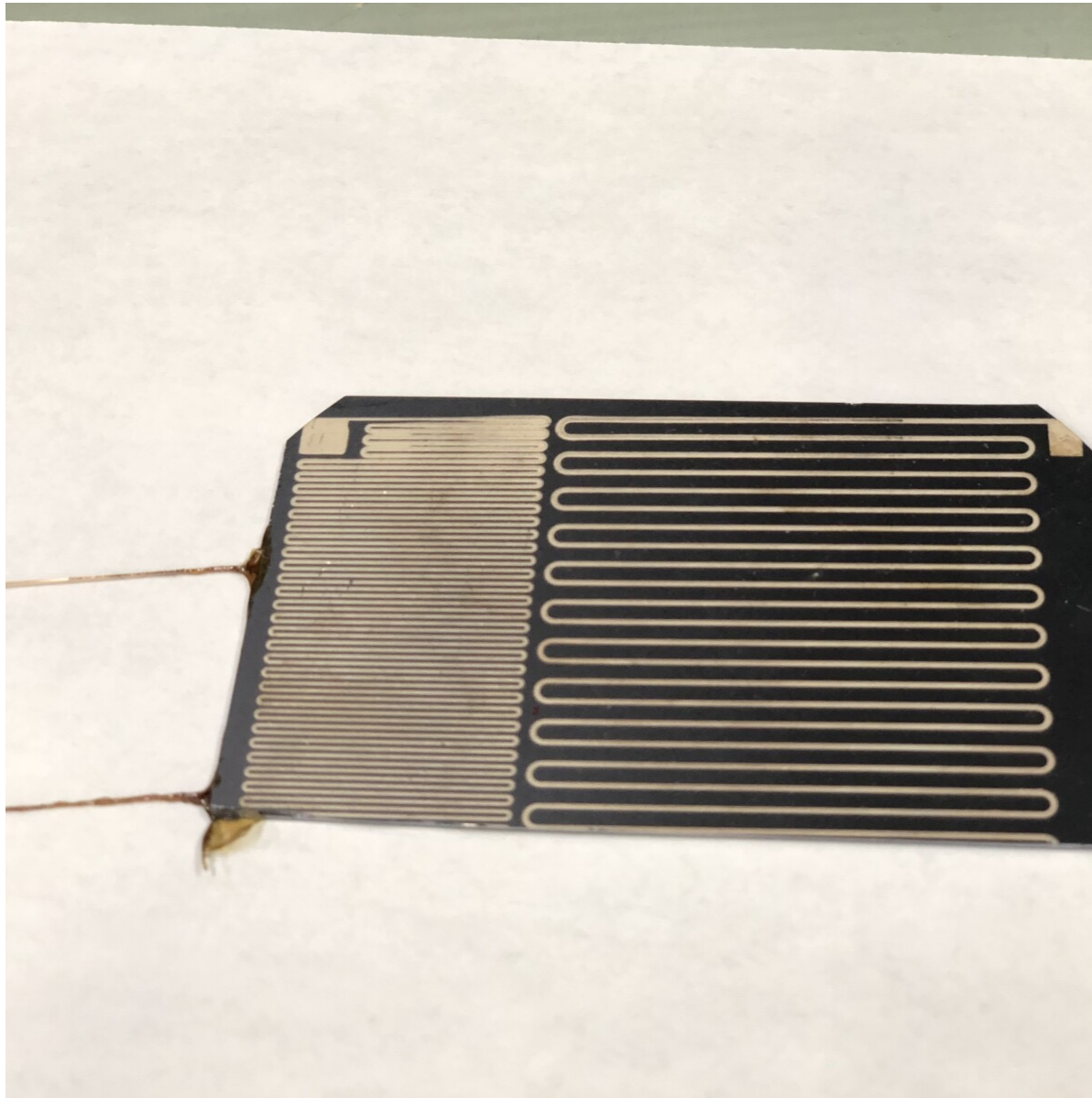
Split Mode Injection

Colorado State University
Fort Collins, CO



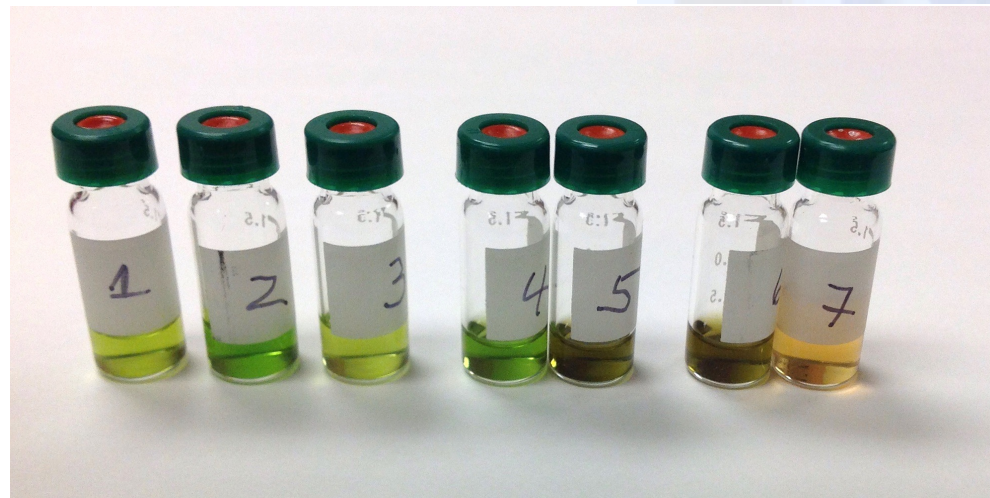
Crazy Column Configuration

Colorado State University
Fort Collins, CO



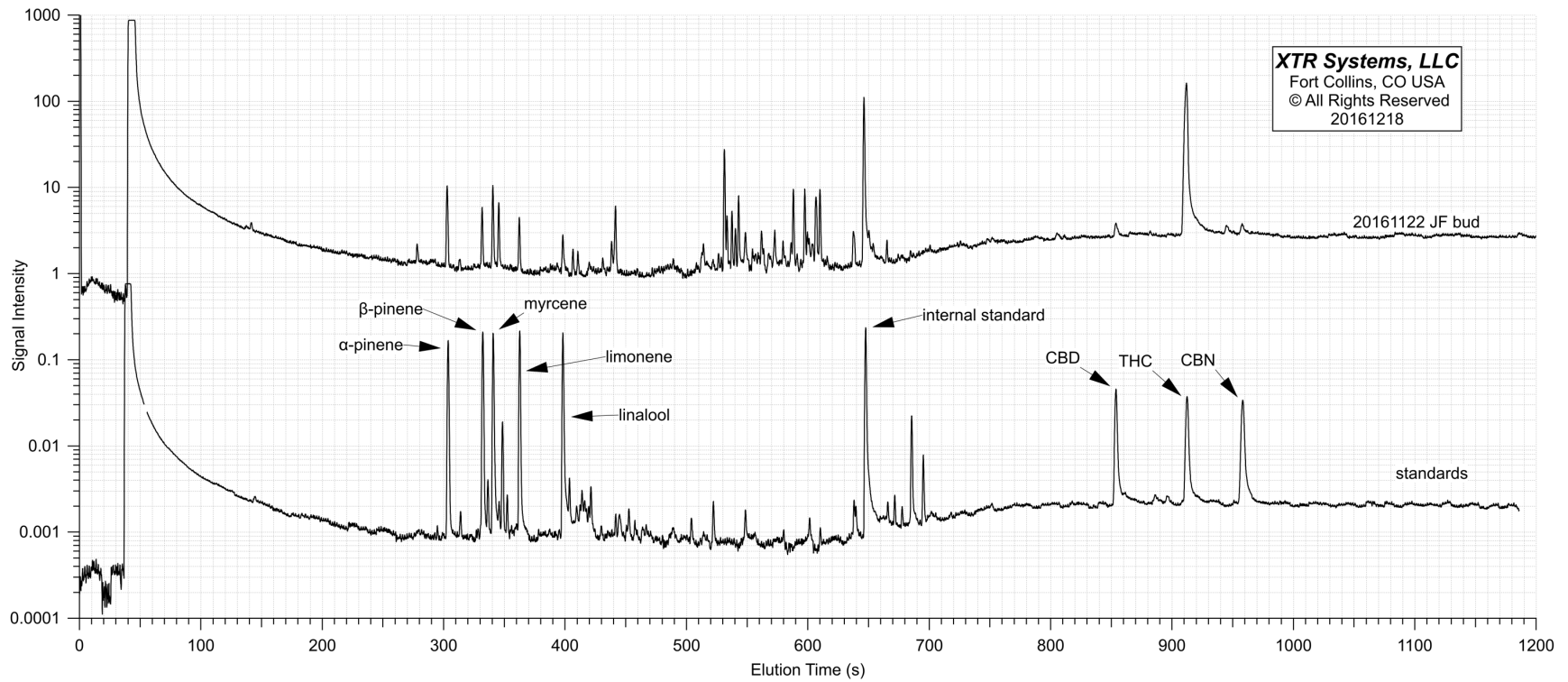
Sample Prep – Vials and Injection Vials

Colorado State University
Fort Collins, CO



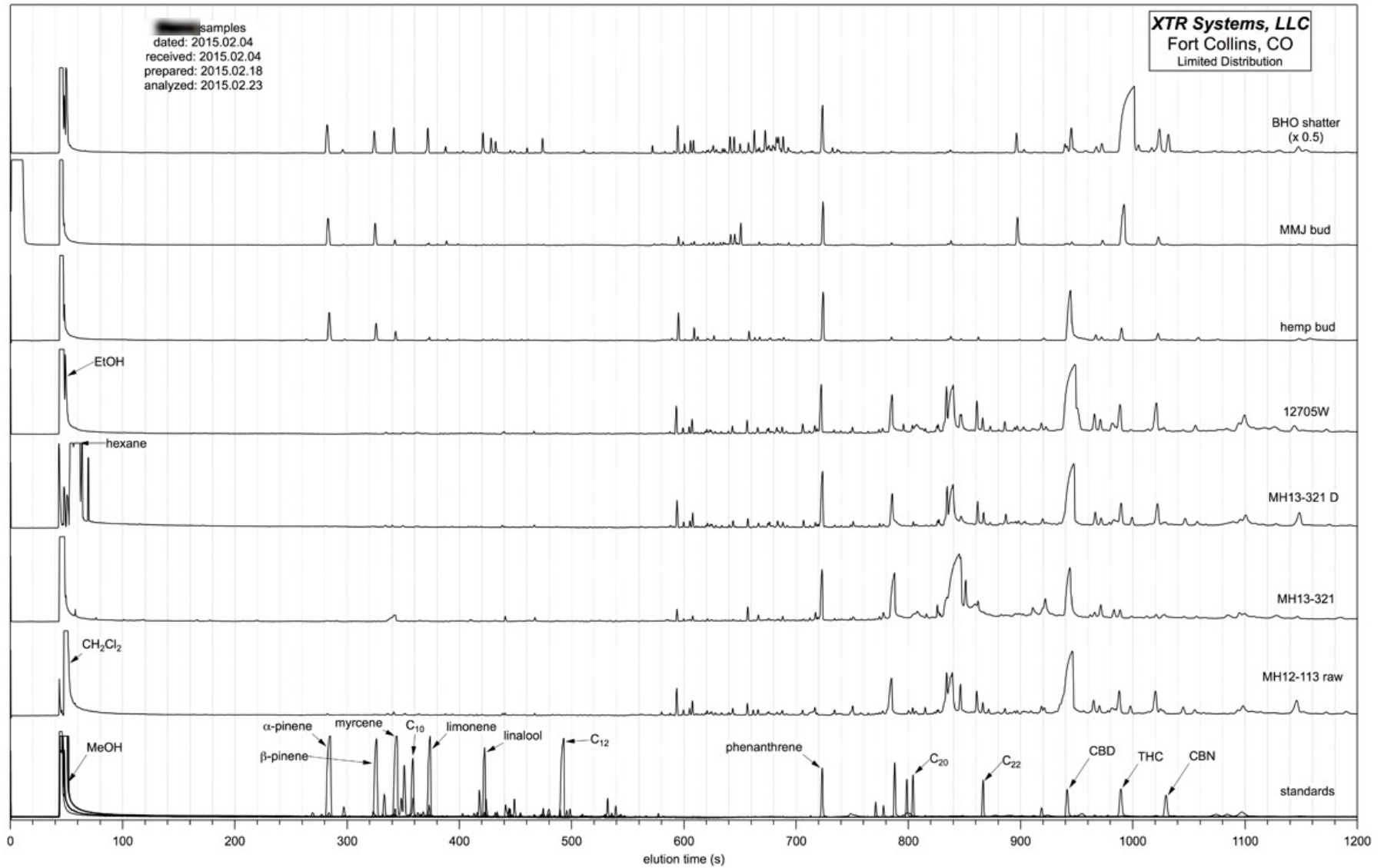
Standards and Sample

Colorado State University
Fort Collins, CO



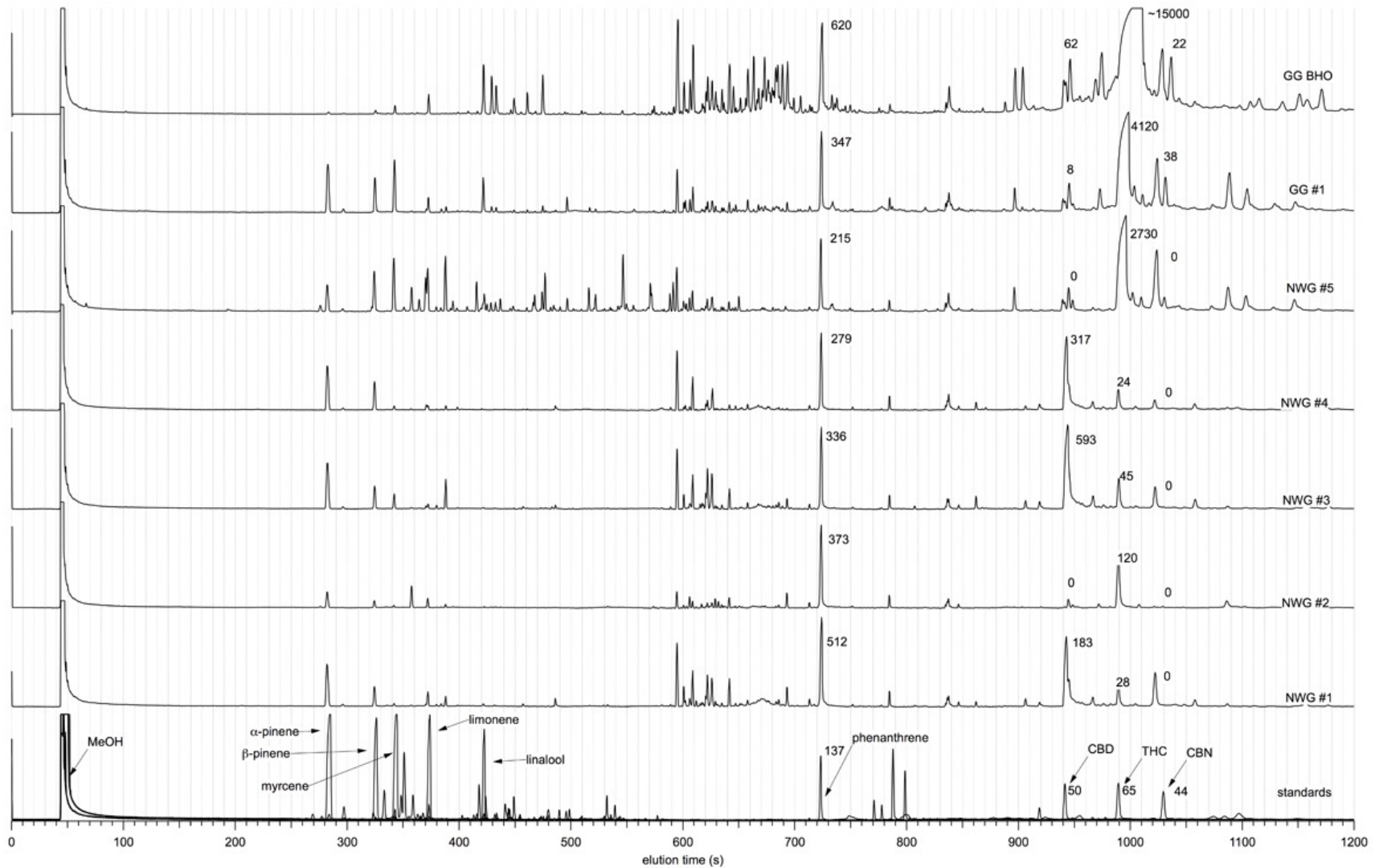
More Samples

Colorado State University
Fort Collins, CO



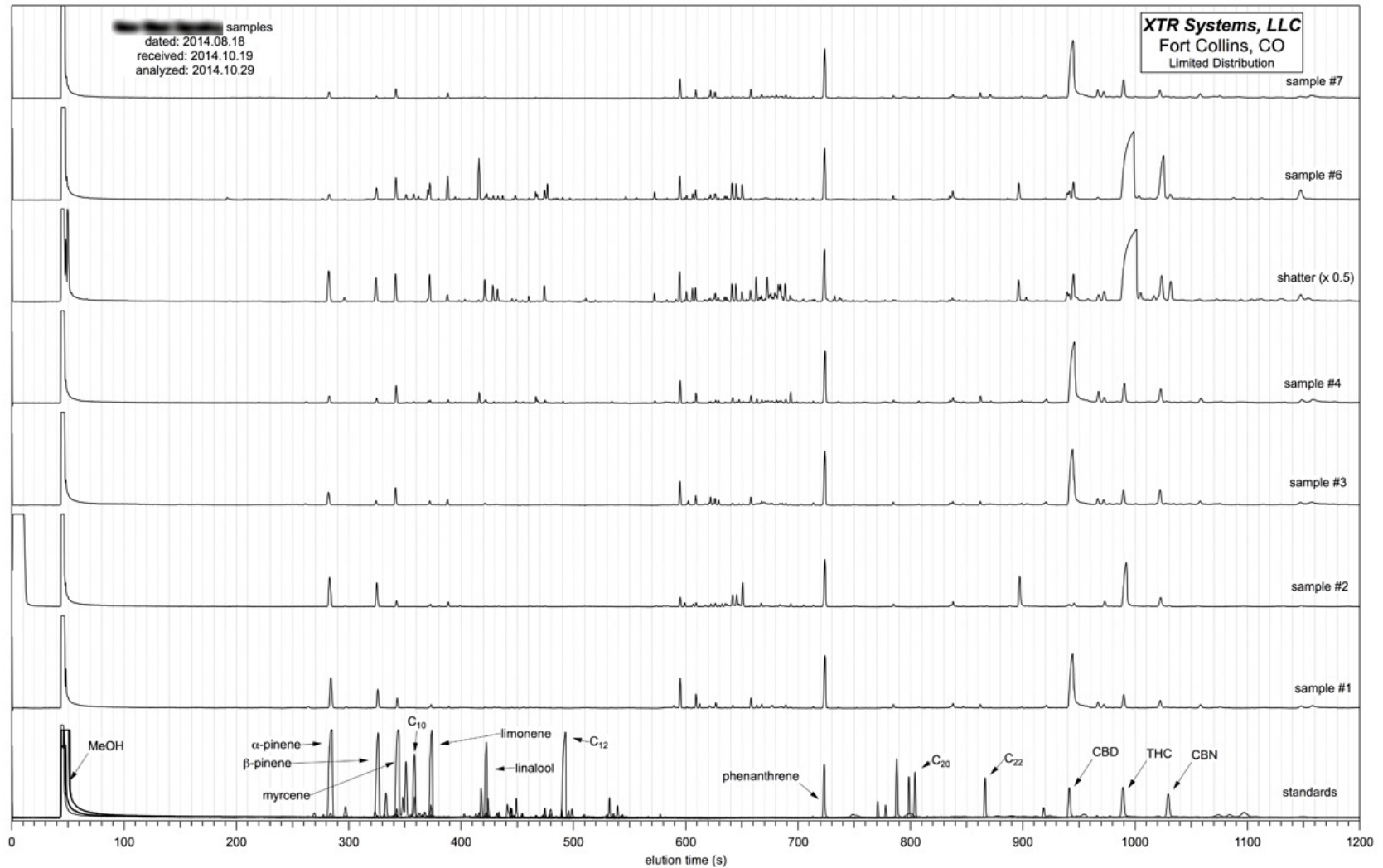
Even More Samples

Colorado State University
Fort Collins, CO



Even More Samples

Colorado State University
Fort Collins, CO



Summary Results Table

Colorado State University
Fort Collins, CO

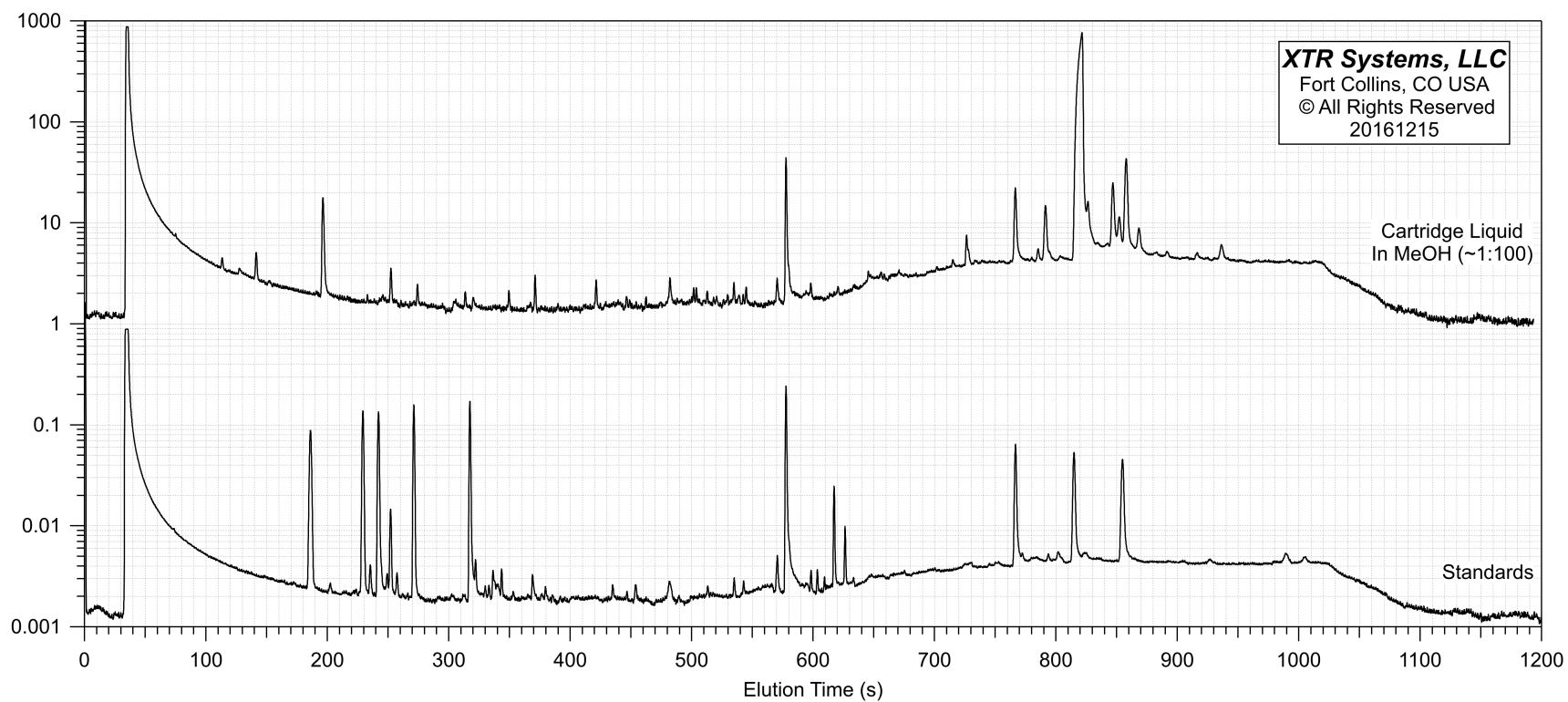
██████████ samples
dated: 2014.08.18
received: 2014.10.19
analyzed: 2014.10.29

XTR Systems, LLC
Fort Collins, CO
Limited Distribution

	a-pinene	b-pinene	myrcene	limonene	linalool	CBD	THC	CBN	moisture
sample #7	0.04%	0.01%	0.05%	0.00%	0.00%	3.95%	0.22%	0.07%	n/a
sample #6	0.03%	0.08%	0.16%	0.07%	0.05%	0.05%	13.80%	1.63%	n/a
sample #4	0.04%	0.02%	0.11%	0.02%	0.02%	4.44%	0.20%	0.13%	n/a
sample #3	0.08%	0.02%	0.10%	0.02%	0.01%	2.58%	0.11%	0.13%	n/a
sample #2	0.49%	0.27%	0.04%	0.01%	0.01%	0.03%	1.84%	0.10%	n/a
sample #1	0.37%	0.13%	0.05%	0.01%	0.01%	2.33%	0.11%	0.05%	n/a
BHO - shatter	0.85%	0.42%	0.48%	0.42%	0.24%	0.08%	42.06%	0.79%	0.0%

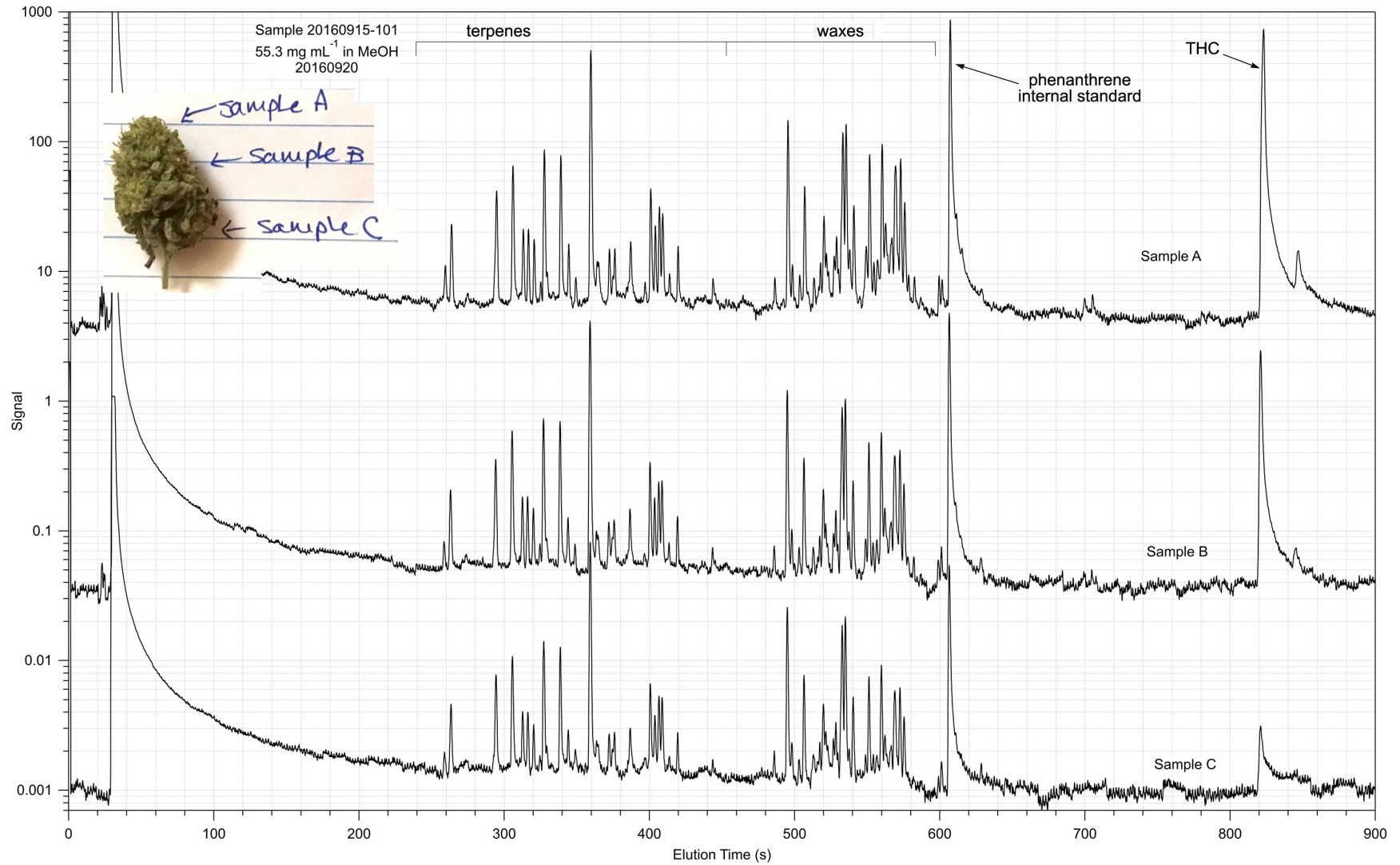
Vape Cartridge Analysis

Colorado State University
Fort Collins, CO



Spatial Distribution in Flower/Bud

Colorado State University
Fort Collins, CO



Example Rigorous Analysis

Colorado State University
Fort Collins, CO

