

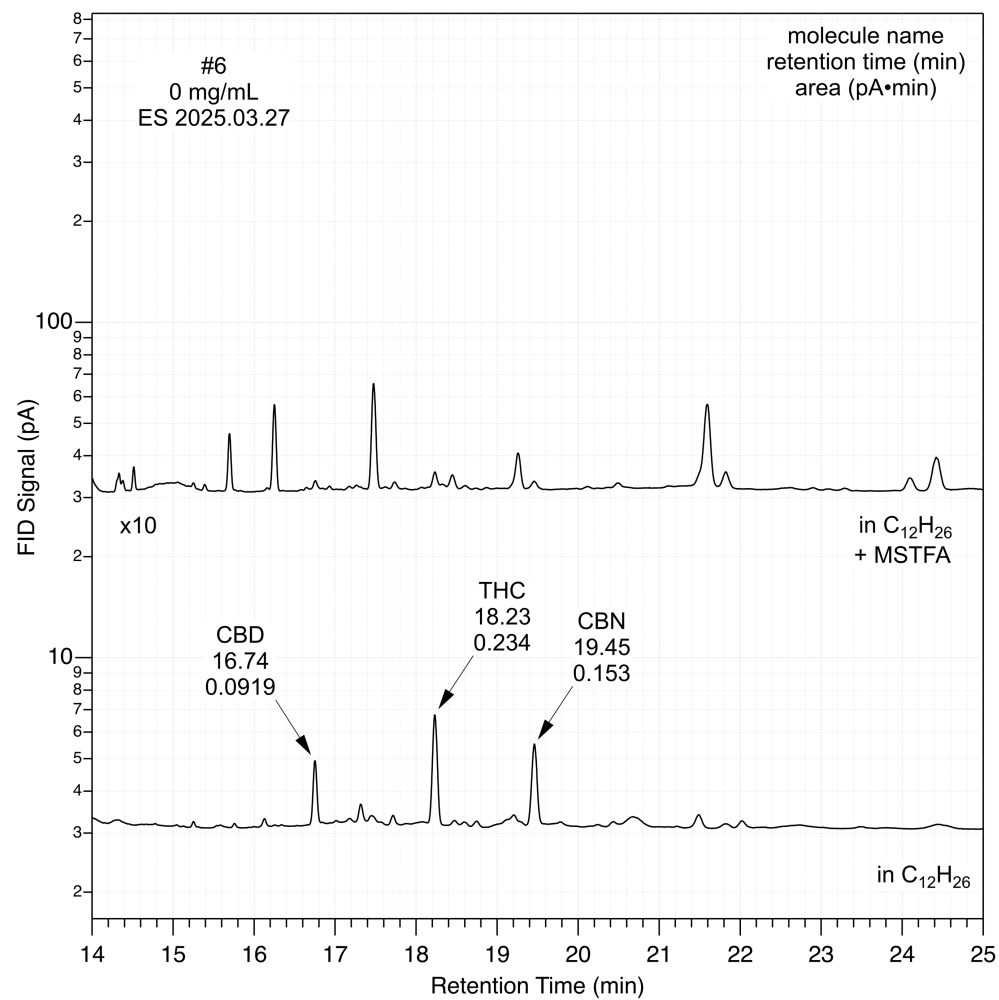
GC Retention Time (min)	CBD	THC	CBN
<u>underivatized</u>	16.75	18.20	19.42
<u>derivatized</u> N-form	14.92	16.20	17.48
<u>derivatized</u> A-form	18.44	21.51	24.10

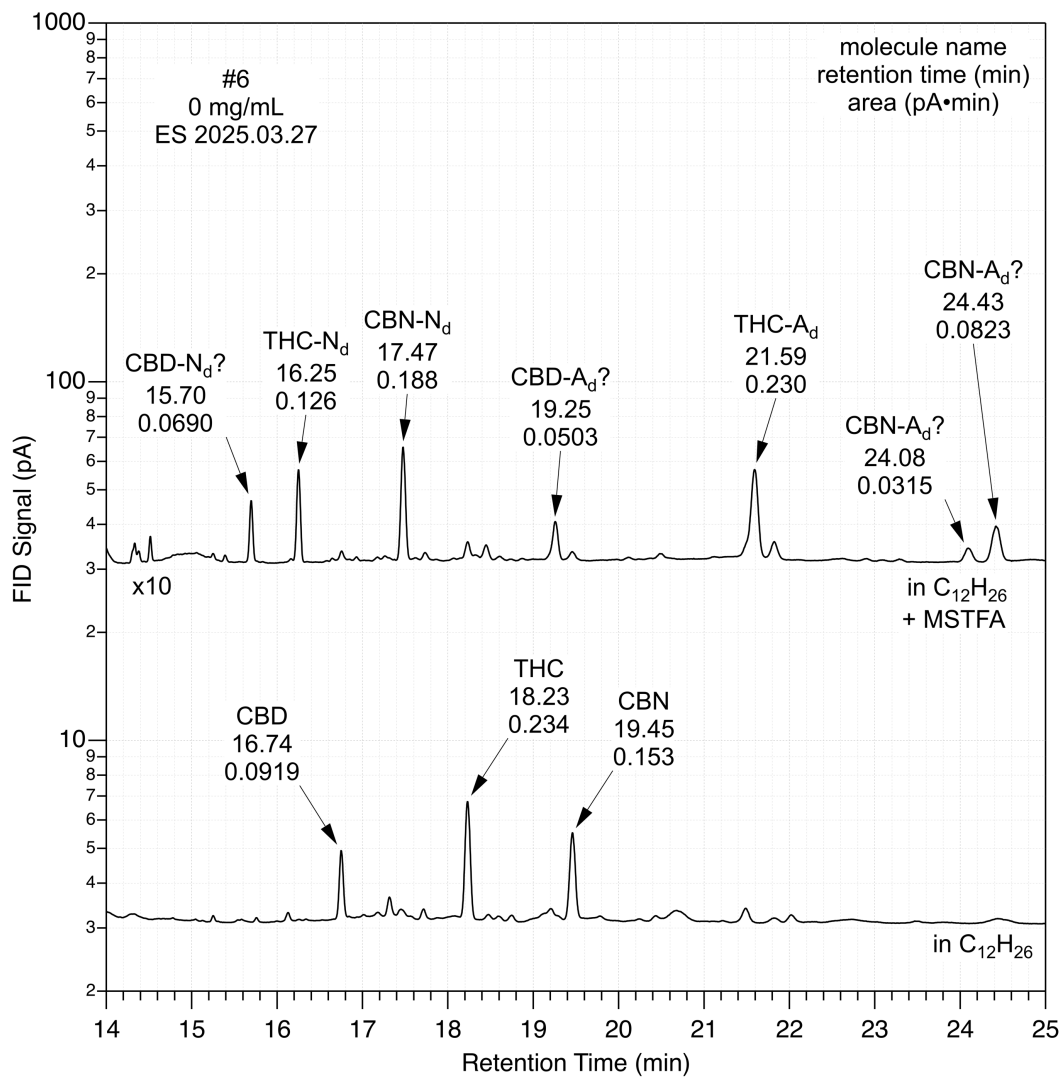
Injector: 250°C

Column: 40°C x 0 min, 25 °C/min x 0 min, 250 °C x 0 min

Column Hydrogen: 0.44 PSI & 0.70 mL/min

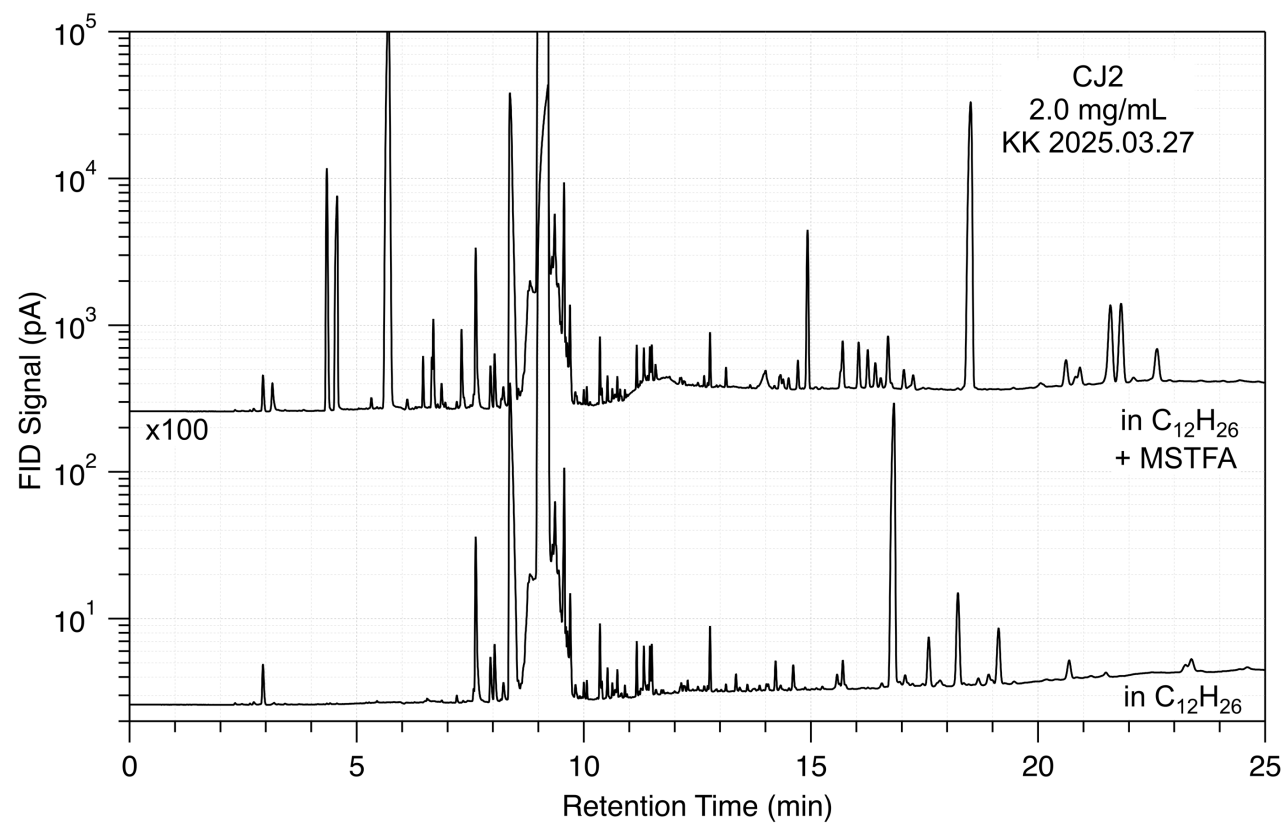
Detector: 300 °C

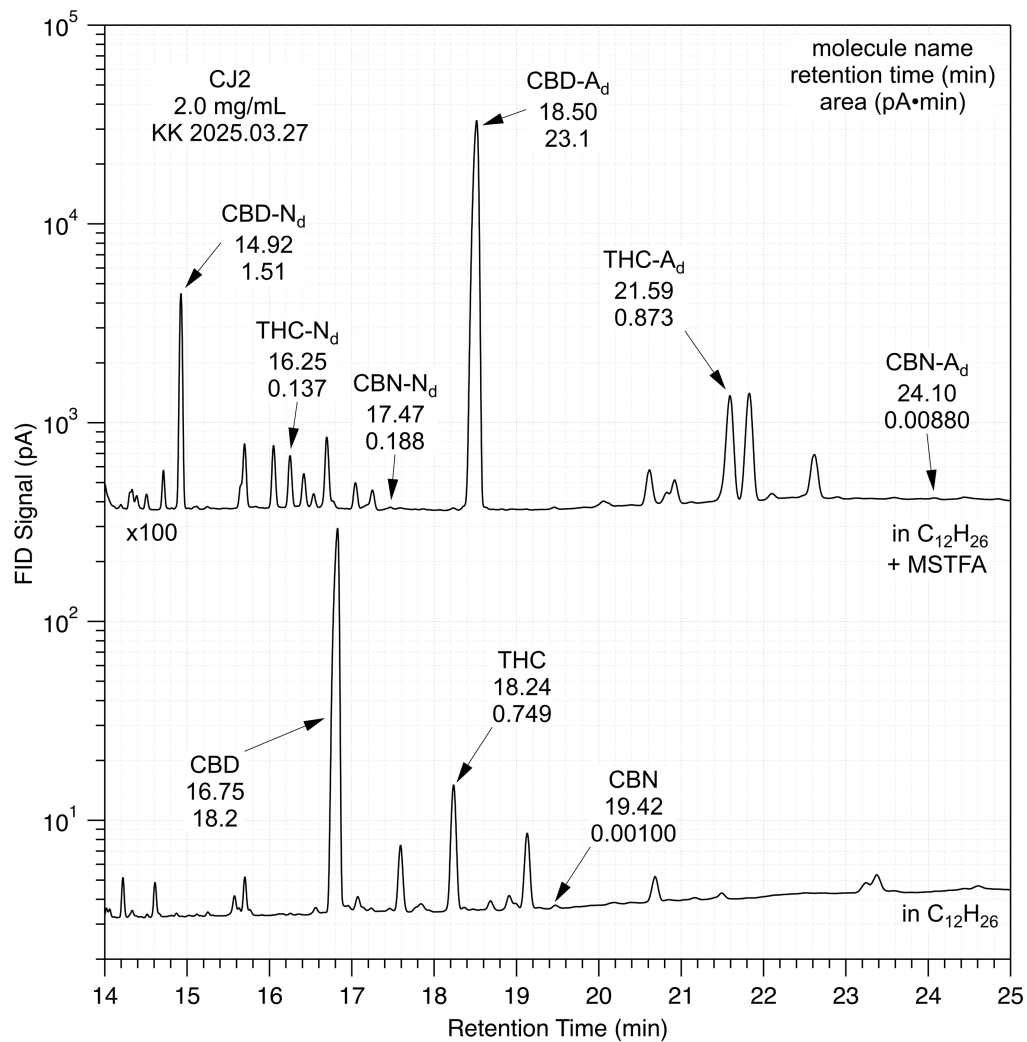




GC Retention Time (min)	CBD	THC	CBN
<u>underivatized</u>	16.75	18.20	19.42
<u>derivatized</u> N-form	14.92	16.20	17.48
<u>derivatized</u> A-form	18.44	21.51	24.10

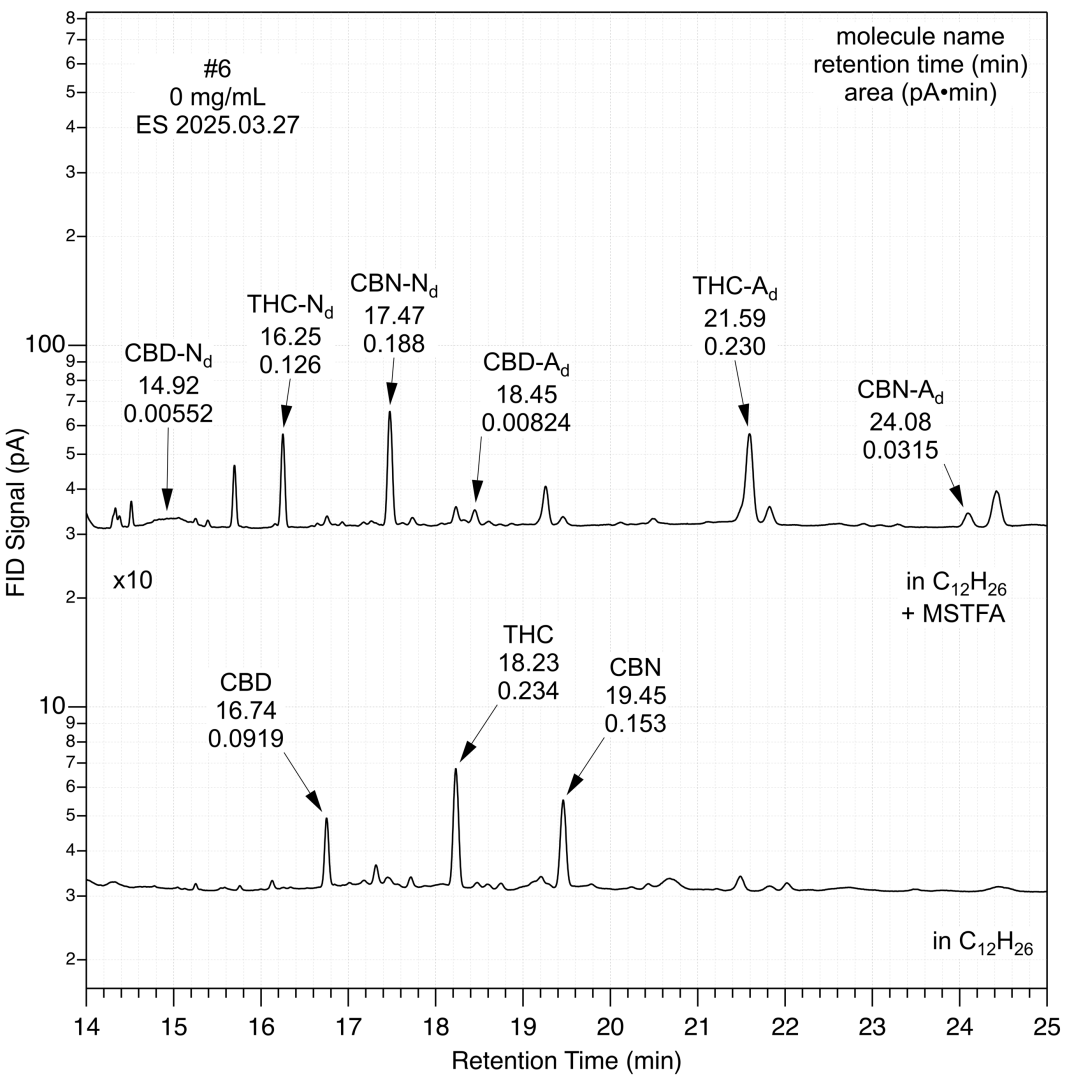
Injector: 250°C
Column: 40°C x 0 min, 25 °C/min x 0 min, 250 °C x 0 min
Column Hydrogen: 0.44 PSI & 0.70 mL/min
Detector: 300 °C





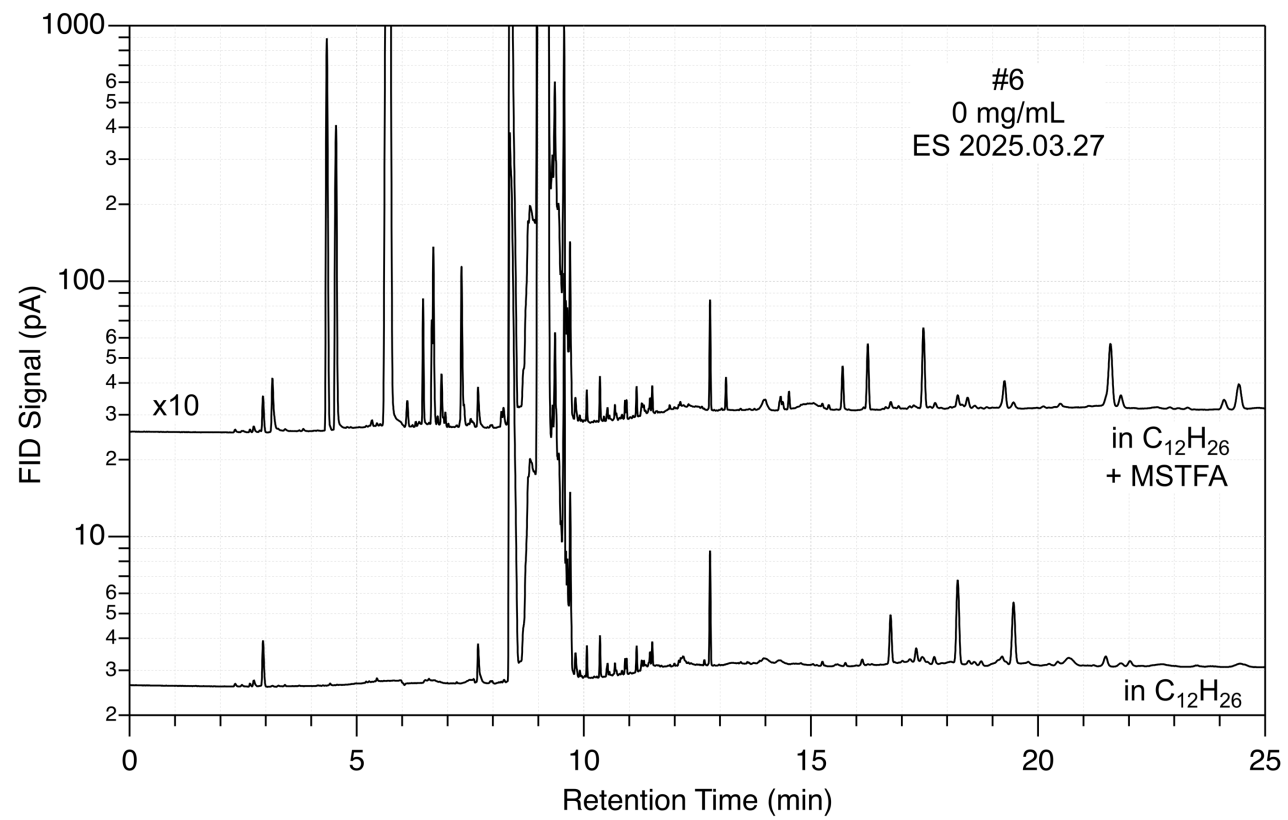
GC Retention Time (min)	CBD	THC	CBN
<u>underivatized</u>	16.75	18.20	19.42
<u>derivatized</u> N-form	14.92	16.20	17.48
<u>derivatized</u> A-form	18.44	21.51	24.10

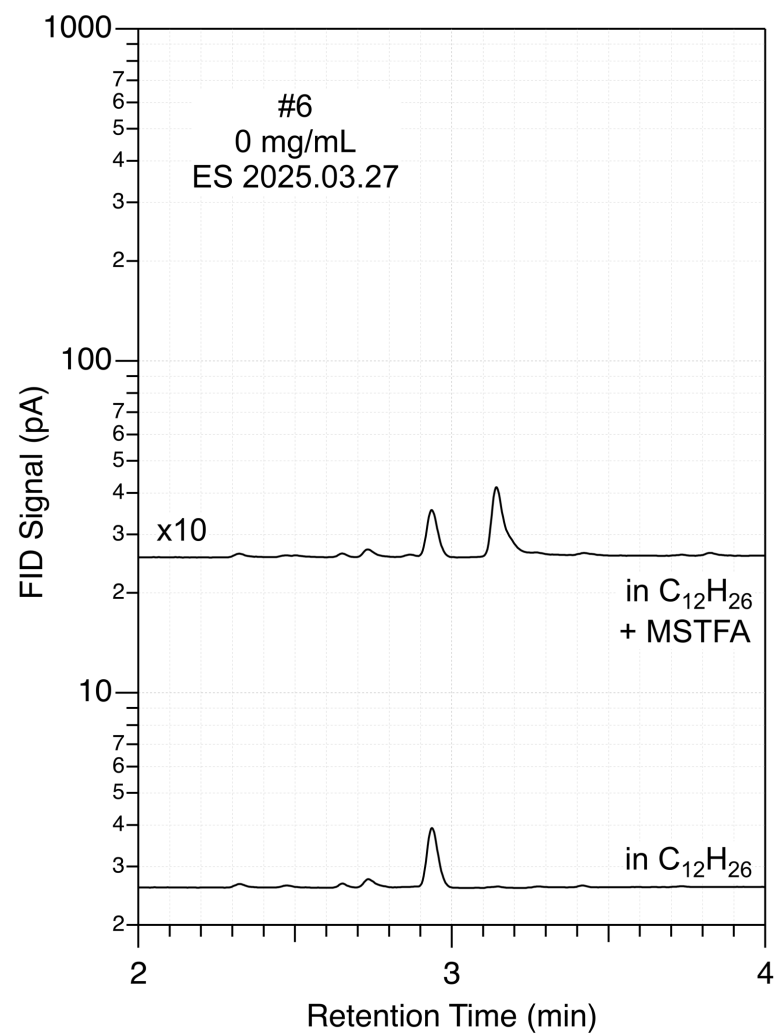
Injector: 250°C
 Column: 40°C x 0 min, 25 °C/min x 0 min, 250 °C x 0 min
 Column Hydrogen: 0.44 PSI & 0.70 mL/min
 Detector: 300 °C

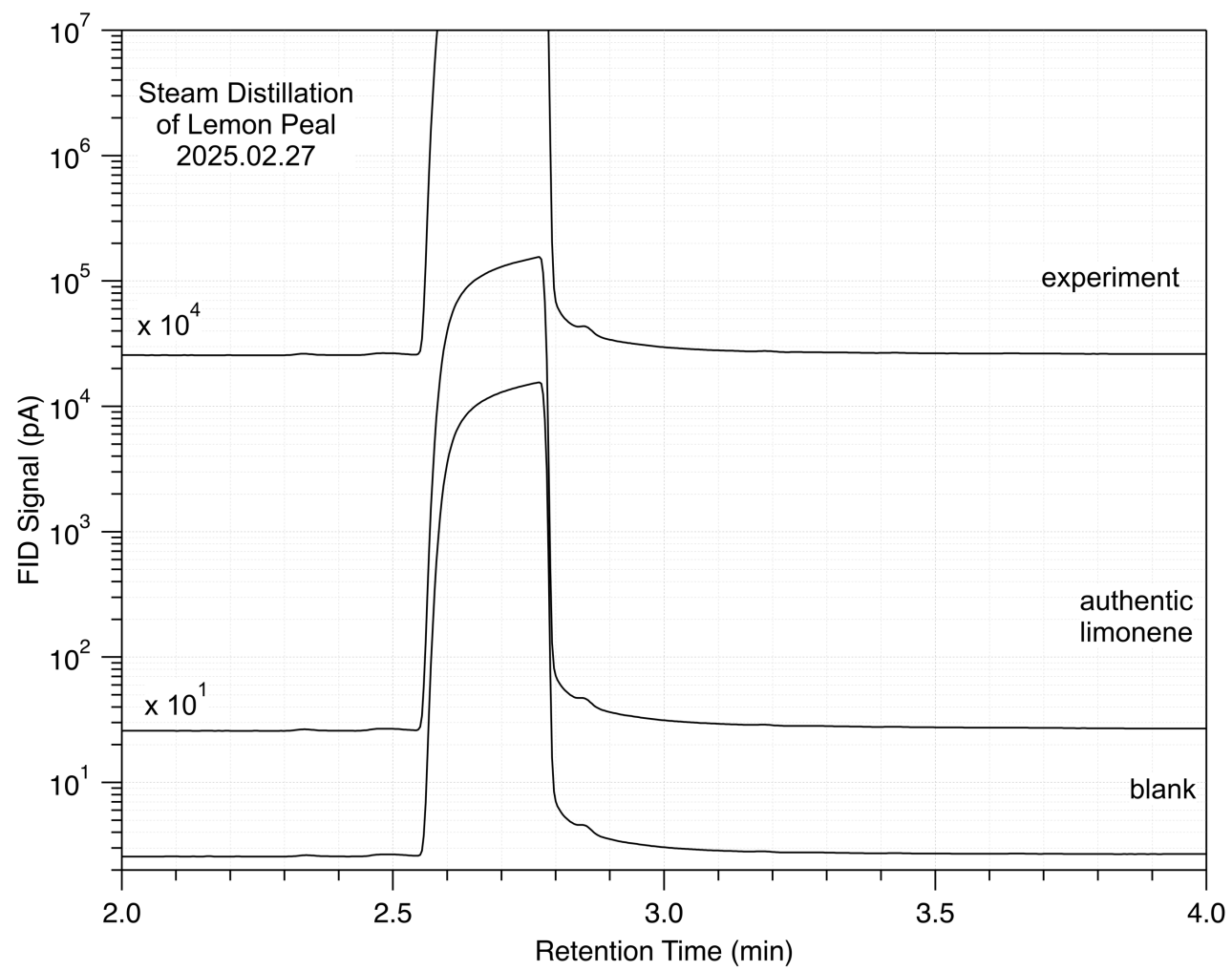


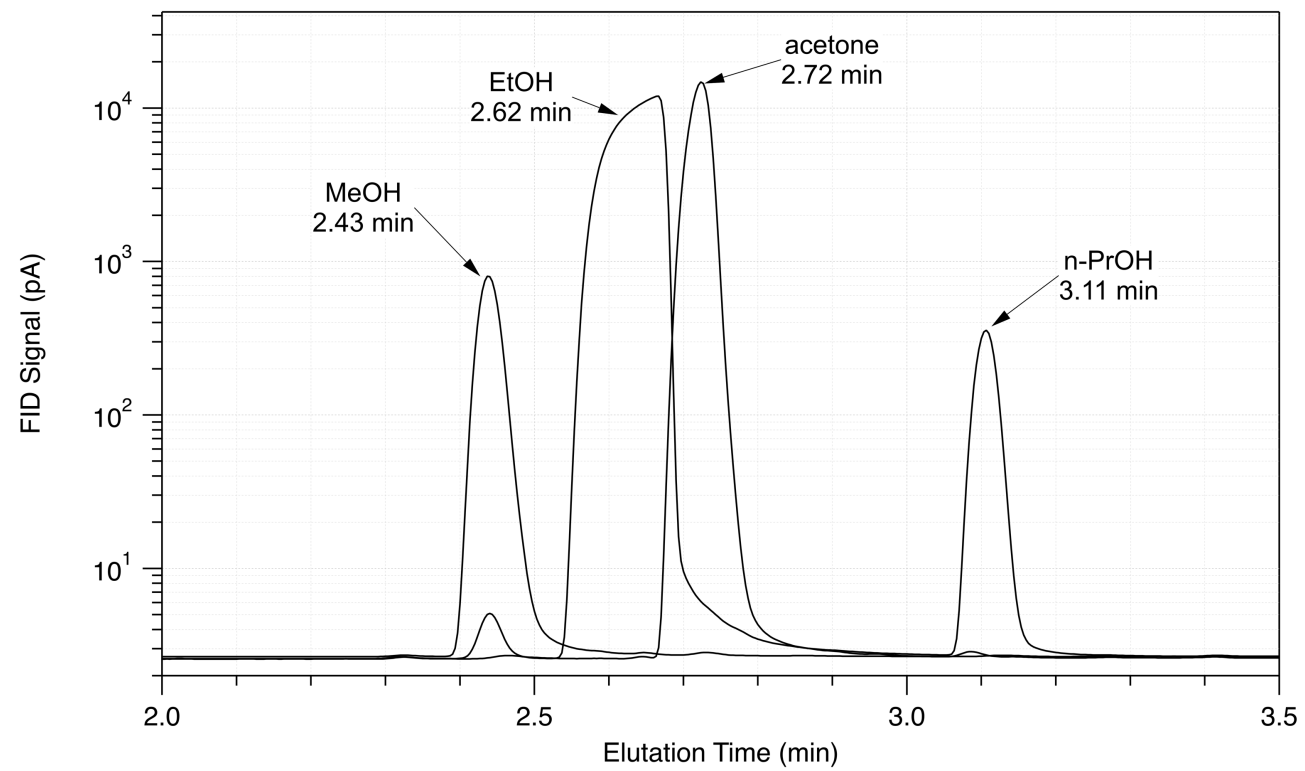
GC Retention Time (min)	CBD	THC	CBN
<u>underivatized</u>	16.75	18.20	19.42
<u>derivatized</u> N-form	14.92	16.20	17.48
<u>derivatized</u> A-form	18.44	21.51	24.10

Injector: 250°C
Column: 40°C x 0 min, 25 °C/min x 0 min, 250 °C x 0 min
Column Hydrogen: 0.44 PSI & 0.70 mL/min
Detector: 300 °C





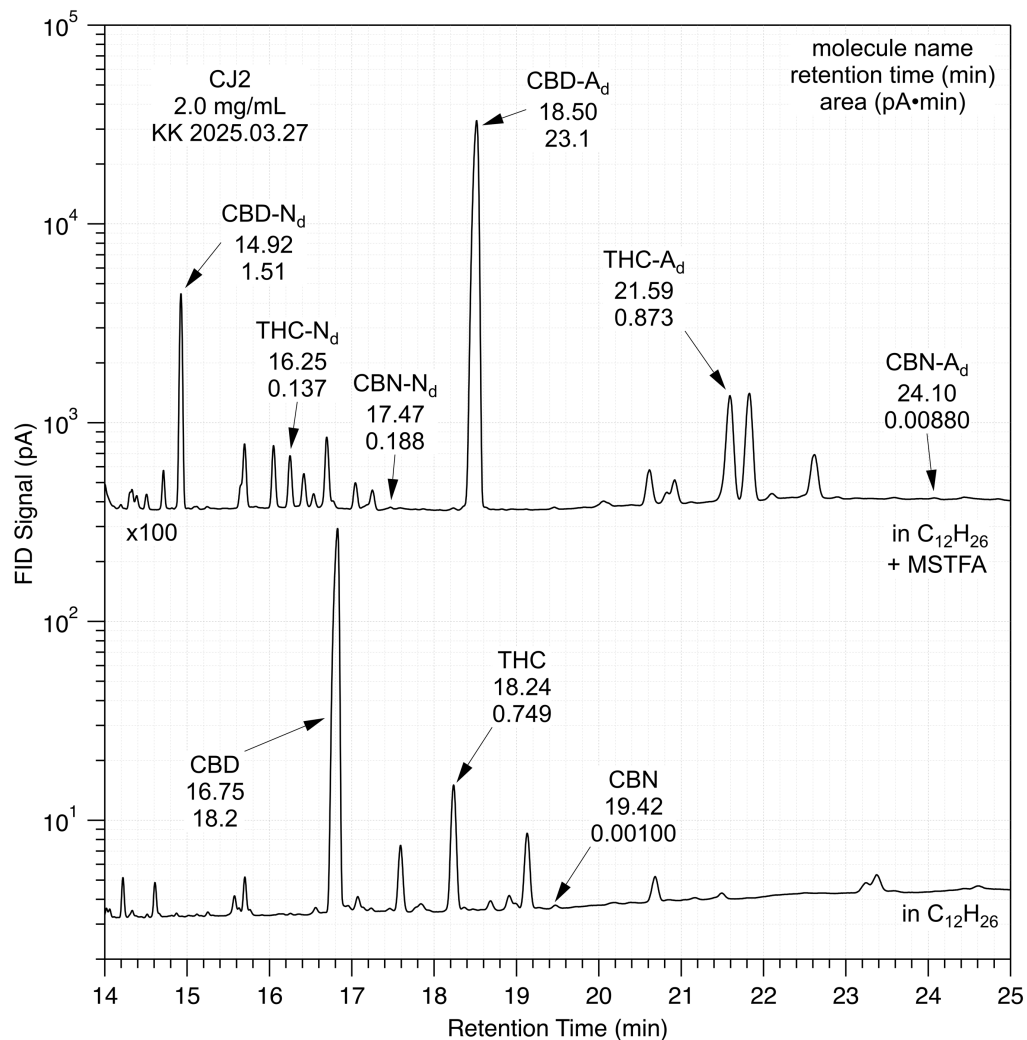




```

+=====+
|      GC-FID cannabinoid signal response      |
+=====+
| Measured using 1 uL injection of CBD:        |
| 6.40 (+/- 0.05) x 10^-3 (pA•min) / (ug/mL)   |
| 0.384 +/- 0.003 (pA•s) / (ug/mL)            |
+=====+
| For integral analysis using a 1 uL injection |
| 156 +/- 2 (ug/mL) / (pA•min)                 |
| 2.60 +/- 0.02 (ug/mL) / (pA•s)              |
+=====+
| n.b. 1 ug/mL <=> 1 ng/uL                     |

```



GC-FID cannabinoid signal response

Measured using 1 uL injection of CBD:

$6.40 (+/- 0.05) \times 10^{-3} \text{ (pA} \cdot \text{min) / (ug/mL)}$

$0.384 +/- 0.003 \text{ (pA} \cdot \text{s) / (ug/mL)}$

For integral analysis using a 1 uL injection

$156 +/- 2 \text{ (ug/mL) / (pA} \cdot \text{min)}$

$2.60 +/- 0.02 \text{ (ug/mL) / (pA} \cdot \text{s)}$

n.b. 1 ug/mL \Leftrightarrow 1 ng/uL

